

LITHOCHROME® Antiquing Release Pro

and LITHOTIQUE™ Antiquing Agent

■ Concrete Color Chart A-136LA ■



Twinings Backyard



Protect Your Concrete with Scofield Sealers

Scofield sealers protect the surface, enhance the appearance of colored concrete, and may provide protection against contamination and chemical attack by imparting a film-forming layer on the surface of the concrete. Consult a Scofield Concrete Cures & Sealers Guide.

LITHOCHROME® Antiquing Release Pro is an odorless, high-performance powder stamp tool release that adds color accents, as it eliminates the suction created when stamp tools are lifted from freshly placed wet cementitious material. This allows artisans to create concrete that simulates a variety of natural materials.

LITHOCHROME®

Antiquing Release Pro & LITHOTIQUE™ Antiquing Agent

PRODUCT DESCRIPTIONS:

LITHOCHROME® ANTIQUING RELEASE PRO

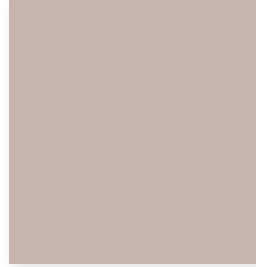
LITHOCHROME® Antiquing Release Pro is dusted over the surface of freshly colored concrete flatwork before stamping or texturing. The release powder prevents the tool from sticking to the concrete surface during installation and provides a secondary accent of colors.

Tamping the stamping tool embeds the colored release powder in the textured surfaces of the concrete. Upon washing and sealing, the contrast in color between the underlying concrete and the release powder, creates a visually attractive antiqued look on the concrete. The added release color also enhances the depth of texture for a more natural and realistic finish.

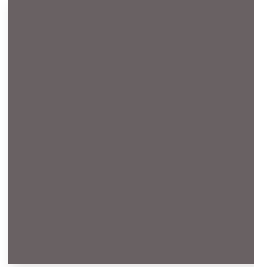
The amount of release agent retained on the concrete will vary with job site conditions. The resulting colorations will range between the concrete color and that of the antiquing release powder. The surface must be sealed and maintained to preserve its antiqued appearance over time.

LITHOTIQUE™ ANTIQUING AGENT

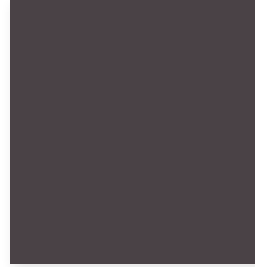
LITHOTIQUE™ Antiquing Agent is used to add an accent color to unsealed hardened textured concrete and unsealed overlaid textured surfaces.



A-54 Smoke Beige



A-33 Classic Gray



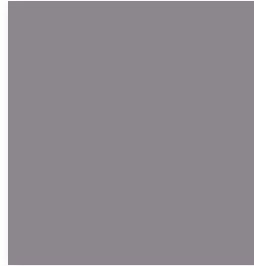
A-21 Deep Charcoal



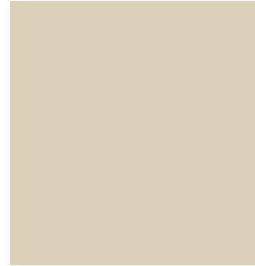
A-25 La Crescenta Brown



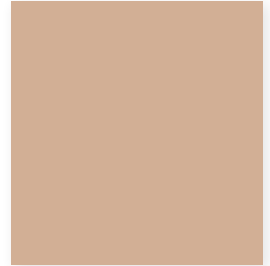
A-50 Slate Gray



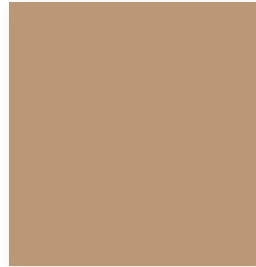
A-57 Platinum Gray



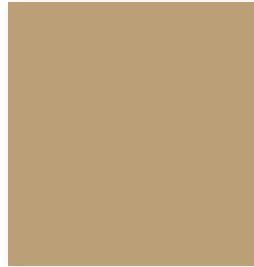
A-75 Oyster White



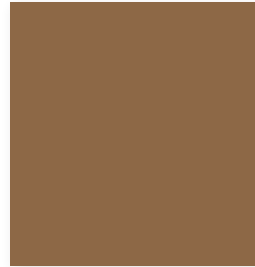
A-59 Beige Cream



A-58 Swiss Coffee



A-51 Steadman Buff



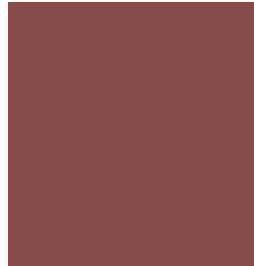
A-55 Pecan Tan



A-31 Walnut



A-24 Russet



A-26 Brick Red